



# Shoreline Dynamics:

## Beach Jurisdiction & Beach Renourishment

**Jessica Boynton**

Shoreline Specialist

Ocean and Coastal Resource Management (OCRM)

**South Carolina Department of Health and Environmental Control**

*Promoting and Protecting the Health of the Public and the Environment* [www.scdhec.gov](http://www.scdhec.gov)

# PURPOSE

- To provide coastal information to the public, managers, planners, and researchers in an interactive, updateable, map-based format

Two web applications

1. Beachfront Jurisdictions
2. Beach Renourishment

- Applications are supported by SC Coastal Zone Management Program's coastal hazard strategy and our goal of providing better access to coastal data.

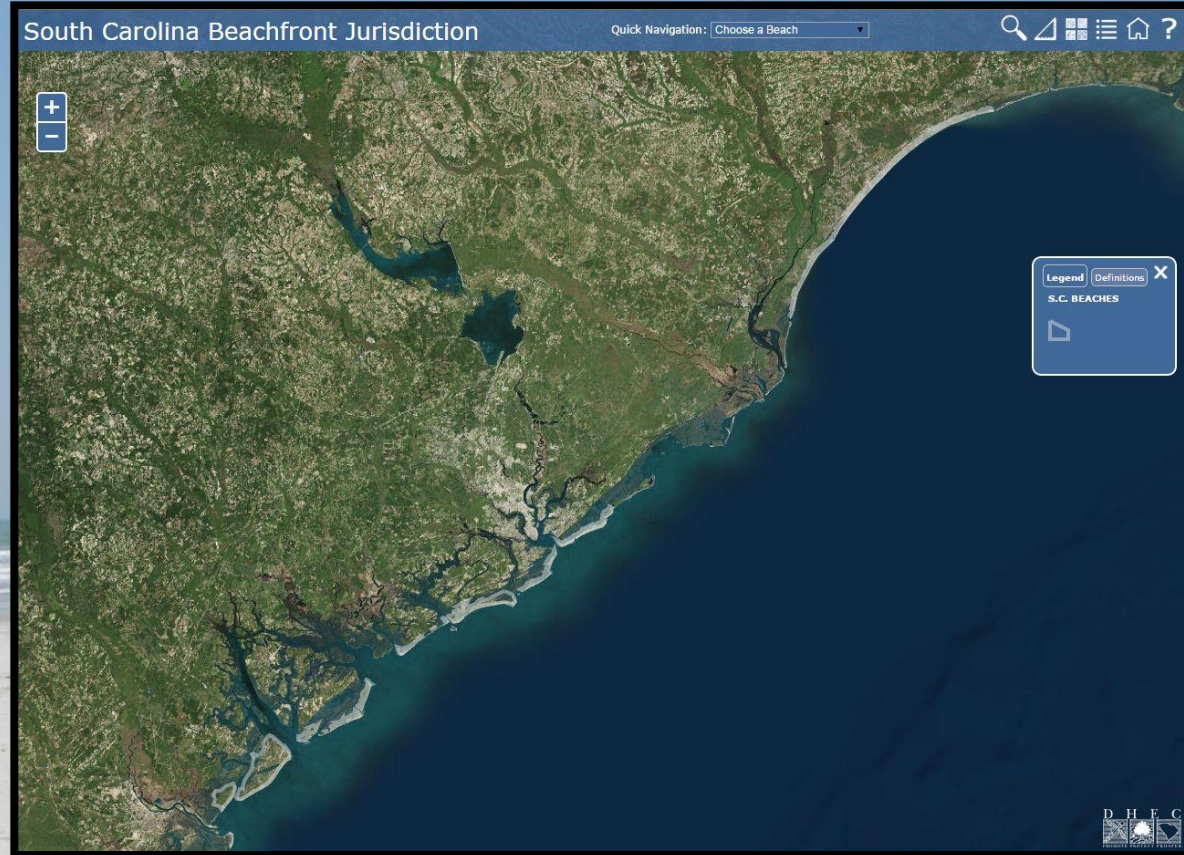
# BEACHFRONT JURISDICTIONS

## USERS

- Current homeowners
- Future homeowners
- Surveyors
- Consultants
- Realtors

## CONTENT

- Jurisdictions in beachfront critical area (baseline, setback line)
- Coastal survey monuments
- Adopted erosion rates
- Survey packets
- Beach zones



<http://gis.dhec.sc.gov/shoreline/>

# BEACHFRONT JURISDICTIONS

Quick Navigation: ISLE OF PALMS

### South Carolina Beachfront Jurisdiction

Quick Navigation: ISLE OF PALMS

**ISLE OF PALMS**

[Download Survey Packet](#) [More info](#)

[Zoom to](#)

**Legend** Definitions

**ADOPTED EROSION/ACCRETION RATES**

- 

**BEACHFRONT JURISDICTION**

- BASE LINE
- SET BACK LINE

**BEACH ZONES**

- STABILIZED INLET ZONE
- STANDARD ZONE
- UNSTABILIZED INLET ZONE

**S.C. BEACHES**

# BEACHFRONT JURISDICTIONS


Quick Navigation:       

Navigate By Address:   | Navigate By Parcel:   

- Quick Navigation pull-down
- Search tool
  - By address
  - By Parcel
- Measurement tool
  - Distance
  - Area
  - Coordinates
- Base Map
- Legend

   
Measurement Result  
\_\_\_\_\_


   
Imagery    Imagery with Labels  
Streets    Topographic

**Legend** **Definitions** 



**ADOPTED EROSION/ACCRETION RATES**




**BEACHFRONT JURISDICTION**

-  BASE LINE
-  SET BACK LINE

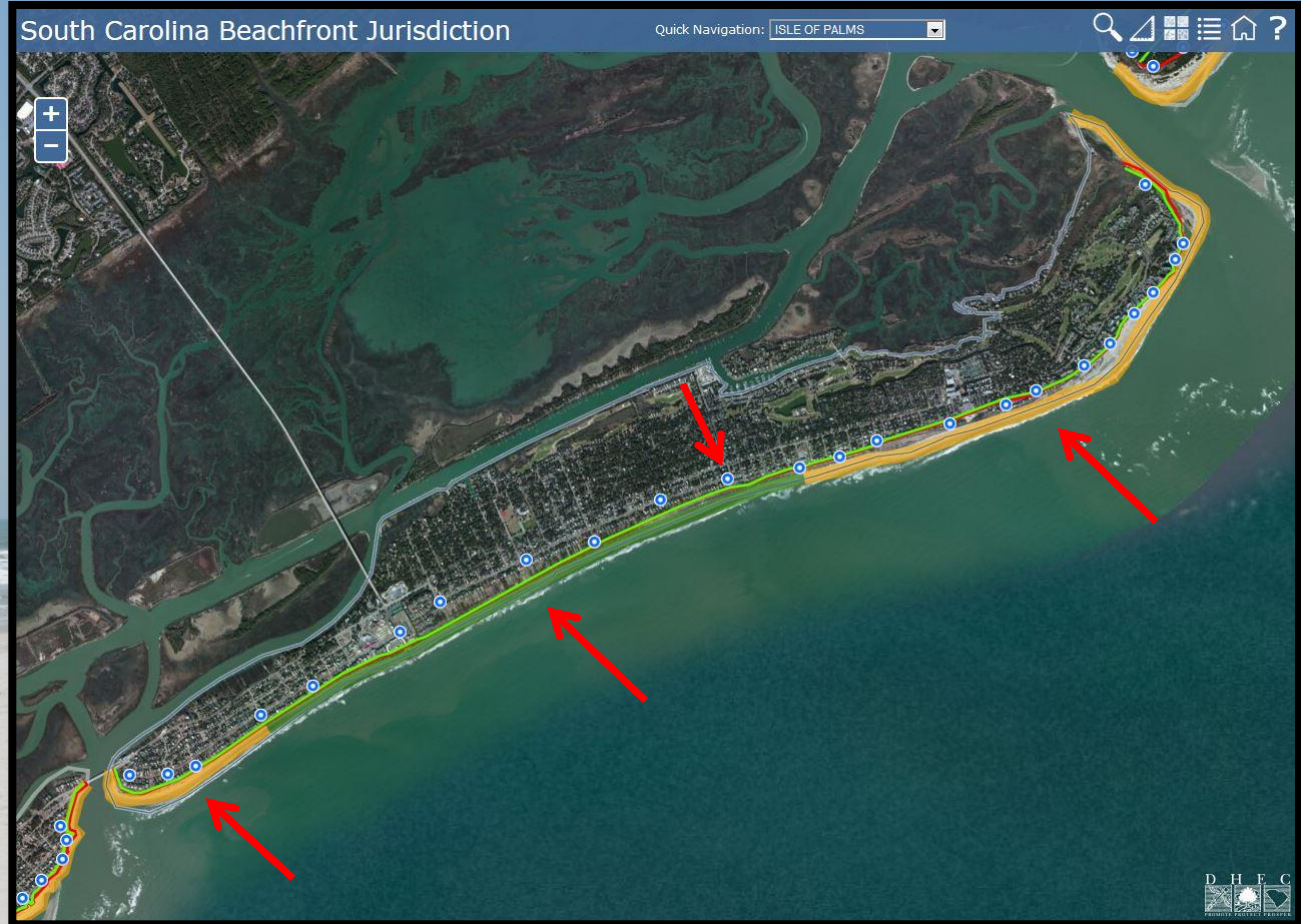
**BEACH ZONES**

-  STABILIZED INLET ZONE
-  STANDARD ZONE



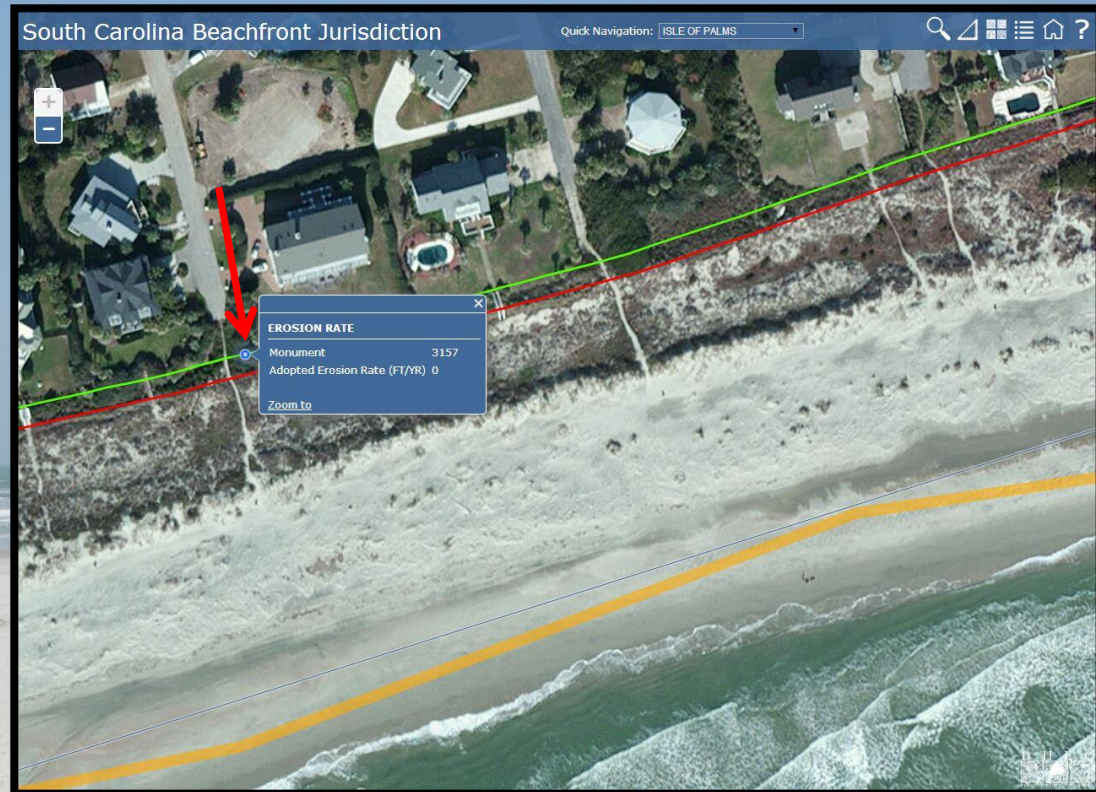
# BEACHFRONT JURISDICTION

- Beach zones
  - Standard
  - Stabilized Inlet
  - Unstabilized Inlet
- Coastal survey monuments



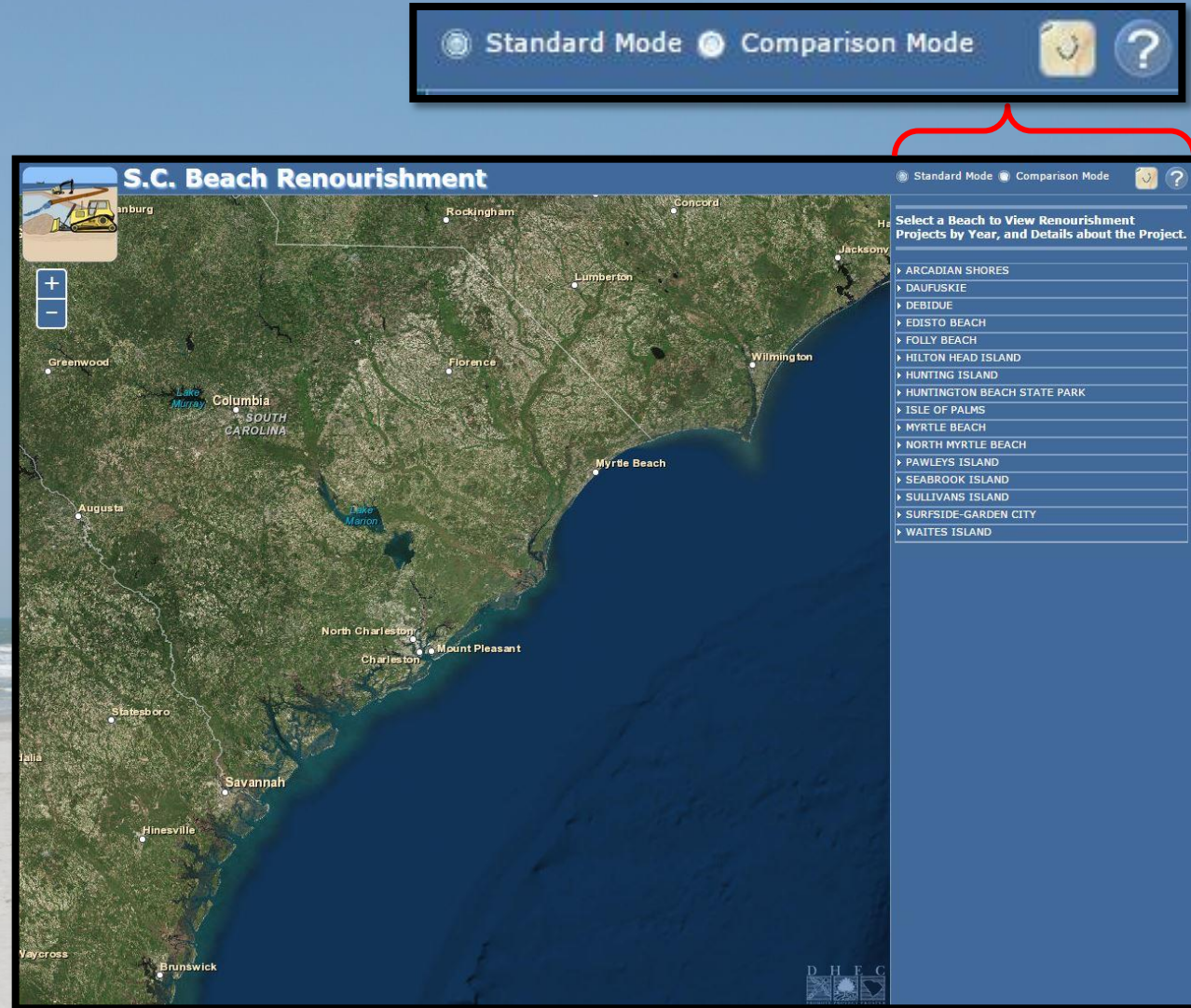
# BEACHFRONT JURISDICTION

- Jurisdiction in beachfront critical area
  - Baseline
  - Setback line
- Coastal survey monuments
  - Adopted Erosion Rates
- Beach zones
  - Unstabilized Inlet Zone



# BEACHFRONT RENOURISHMENT

- All completed renourishment projects in SC
- Attributes
  - Project extent
  - Size
  - Cost
  - Funding source
  - Permit #
  - Sand borrow sites





# BEACHFRONT RENOURISHMENT

- **Standard Mode**
  - Sponsor
  - Permit #
  - Sand Volume
  - Sand Source
  - Cost
  - Funding source
- **Comparison Mode**
  - Extents of all projects

**FOLLY BEACH**

- ▶ 1979
- ▶ 1990

**S.C. Beach Renourishment**

Standard Mode Comparison Mode

Select a Beach to View Renourishment Projects by Year, and Details about the Project.

- ▶ ARCADIAN SHORES
- ▶ DAUFUSKIE
- ▶ DEBIDUE
- ▶ EDISTO BEACH
- ▶ **FOLLY BEACH**
  - ▶ 1979
  - ▶ 1990
  - ▶ 1993
  - ▶ 1998
  - ▶ 2000
  - ▶ 2005
  - ▶ 2007
  - ▶ 2013
  - ▶ **2014**

**FUNDING**

**PROJECT DETAILS**

Sponsor: Corps of Engineers  
Permit: 91-2R-022  
Sand Vol (CY): 1,500,000  
Sand Source: Offshore  
View Borrow Site [View Site](#)  
Total Cost: \$30,700,000.00

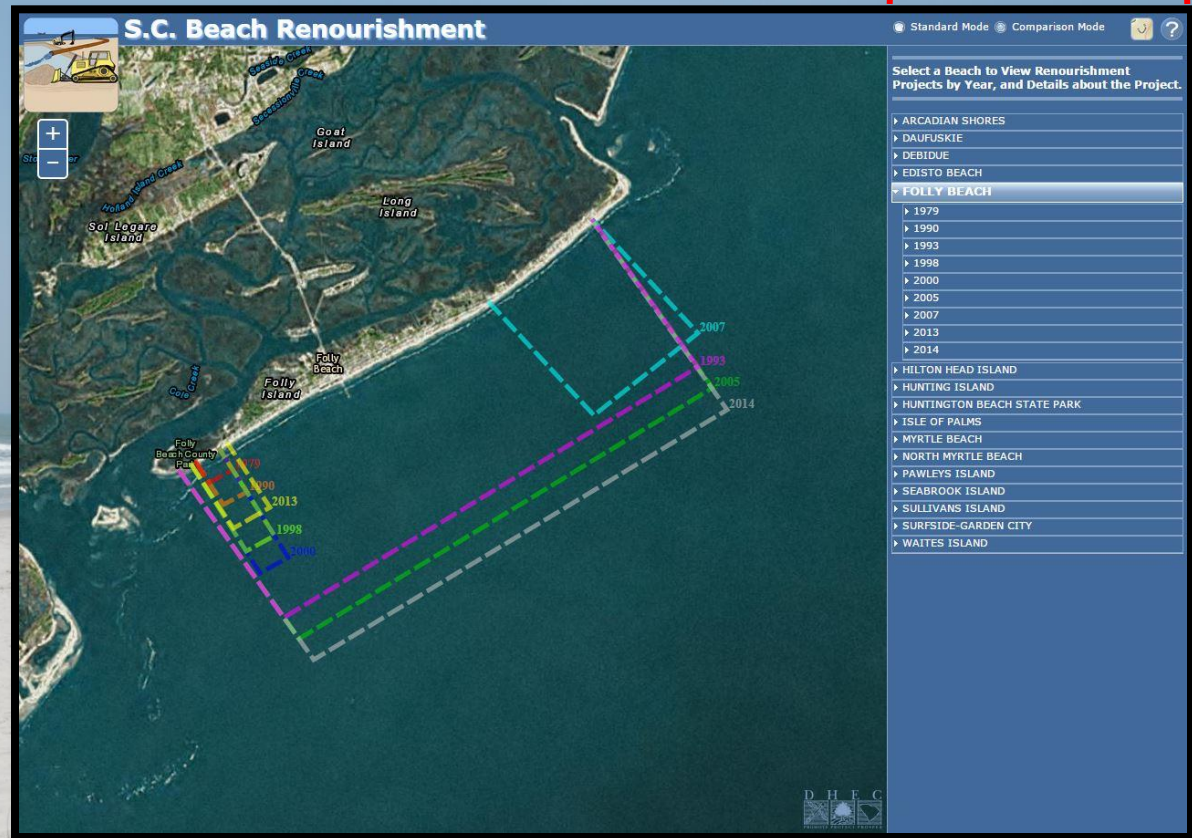
- ▶ HILTON HEAD ISLAND
- ▶ HUNTING ISLAND
- ▶ HUNTINGTON BEACH STATE PARK
- ▶ ISLE OF PALMS
- ▶ MYRTLE BEACH
- ▶ NORTH MYRTLE BEACH
- ▶ PAWLEYS ISLAND
- ▶ SEABROOK ISLAND
- ▶ SULLIVANS ISLAND
- ▶ SURFSIDE-GARDEN CITY
- ▶ WAITES ISLAND

D H E C

Total Cost: \$30,700,000.00

# BEACHFRONT RENOURISHMENT

- **Standard Mode**
  - Sponsor
  - Permit #
  - Sand Volume
  - Sand Source
  - Cost
  - Funding source
- **Comparison Mode**
  - Extents of all projects



# ACKNOWLEDGEMENTS

- Josh Boulware (GIS Manager) – Application Development; [boulwajb@dhec.sc.gov](mailto:boulwajb@dhec.sc.gov); 843-953-0255
- Dan Burger (Director Coastal Services Division); [burgerdj@dhec.sc.gov](mailto:burgerdj@dhec.sc.gov); 843-953-0251.
- Jessica Boynton (Shoreline Specialist) [boyntojb@dhec.sc.gov](mailto:boyntojb@dhec.sc.gov); 843-953-2033



**South Carolina Department of Health and Environmental Control**

**[www.scdhec.gov](http://www.scdhec.gov)**

**(803) 898-DHEC (3432)**



**Like us on Facebook.**

[www.fb.com/scdhec](http://www.fb.com/scdhec)



**Follow us on Twitter.**

[@scdhec](https://twitter.com/scdhec)



**Check us out on YouTube.**

[www.youtube.com/scdhec](http://www.youtube.com/scdhec)