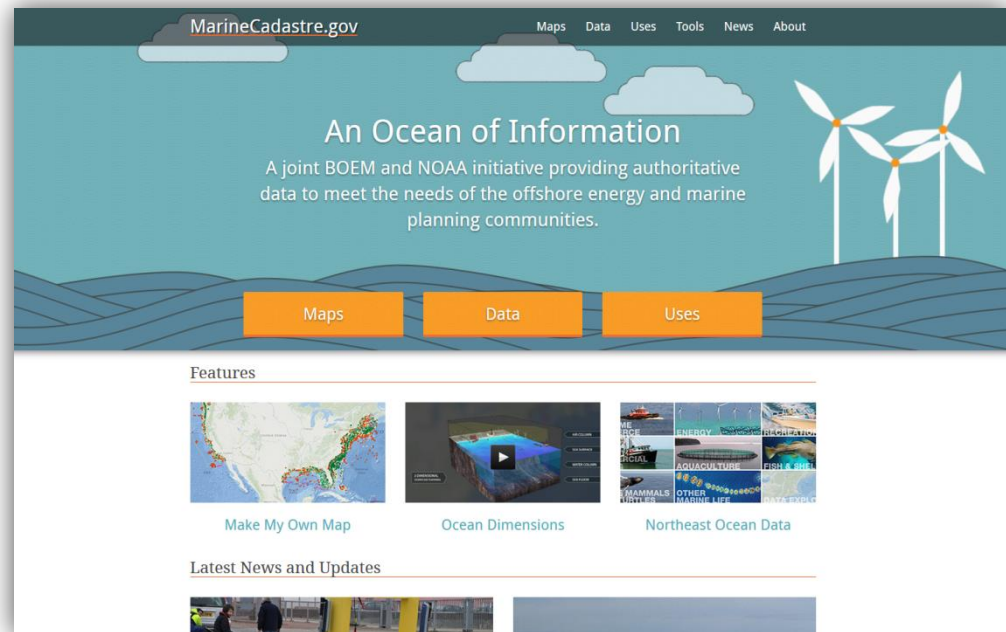


# AN OCEAN OF INFORMATION: [WWW.MARINECADASTRE.GOV](http://WWW.MARINECADASTRE.GOV)

# Brief History and Overview

- **Marine Information System to support offshore renewable energy planning – EP Act 2005**
- **Co-led by BOEM and NOAA**
- **Provides authoritative data, map viewers, tools for the renewable energy & marine planning communities**
- **Requirements driven**



# Components

- ❑ Access to authoritative ocean data and analysis tools
- ❑ Interact with data in viewers and specialized maps
- ❑ Learn more from user examples, use cases, and technical support materials

MarineCadastr.gov Data Registry

The MarineCadastr.gov Data Registry provides direct access to data currently available through MarineCadastr.gov. Filter the data by provider, thematic category, geographic region, and service type. If you are looking for a data set that is currently not available on MarineCadastr.gov, please email us.

MarineCadastr.gov works with data sources to provide highest quality data sets available. When using data for planning purposes, please read the associated metadata and use constraints to be sure the data will meet your needs.

Sign up to receive email updates on changes to our map services.

- [How to Contribute Data](#)
- [MarineCadastr.gov Web Services Frequently Asked Questions](#)
- [Use MarineCadastr.gov Web Services in ArcMap](#)

Search [ ] [ ] My Map 0

Currently displaying 182 Datasets

Clear Filters

Theme: Federal GeoRegulations (14)

12NM Territorial Sea NOAA Office of Coast Survey

2009 to 2011 National AIS at 1 Minute Intervals NOAA Coastal Services Center

Map controls: Add to Map, Share, Full Screen, Refresh, Layer Visibility

MarineCadastr.gov

Maps Data Uses Tools News About

### Maps

MarineCadastr.gov data can be viewed a number of ways: through a national viewer, regional and thematic maps, and story maps. Additional maps can be found within the marine cadastre group on ArcGIS.com.

**National Viewer**  
The MarineCadastr.gov National Viewer contains most of the data in the registry and also some custom tools, such as adding coordinates.

Regional Maps Thematic Maps Story Maps

MarineCadastr.gov

Maps Data Uses Tools News About

## Uses

### Coastal Zone Management Act Boundary

Posted December 12th, 2013 by [Jodie Sprayberry](#)

With the continued growth of coastal populations and haphazard development along the coast, the U.S. Congress realized that our nation's coastal areas needed proper management. Congress therefore passed the **Coastal Zone Management Act** in 1972, which applied to all coastal and Great Lakes states and territories, and sought to balance economic development, environmental conservation, recreation, and other uses of the nation's ocean and Great Lakes coasts. The act established the voluntary National Coastal Zone Management Program. To participate in the program, eligible states needed to develop land and water use management programs that met criteria set forth in the act. Among other things the criteria called for states to identify a **landward and seaward boundary** within which their programs applied.

### Content Categories

- Multimedia (10)
- News (18)
- Updates (3)

### Site Archives

Select Month [ ]

# Focus on Authoritative / Trusted Data

- ❑ Jurisdictions and Boundaries
- ❑ Ocean Uses
- ❑ Marine Habitat
- ❑ Physical and Oceanographic
- ❑ Marine Mammals and Turtles
- ❑ Birds
- ❑ Corals
- ❑ Basemaps





# Data Focus Areas

## Recent

- ❑ Bird Probability – Mid Atlantic
- ❑ Atlantic/Gulf Seagrasses
- ❑ 2012 Commercial Ship Traffic (AIS)
- ❑ Critical Habitat
- ❑ Deep Corals
- ❑ Oil and Gas Resource Plays
- ❑ Recreational Use
- ❑ Sediment Samples
- ❑ Seismic Anomalies
- ❑ Shoreline Classification
- ❑ Ocean Disposal Sites
- ❑ Pacific/Caribbean Seagrasses
- ❑ Pilot Boarding Areas
- ❑ West Coast Benthic

## Future

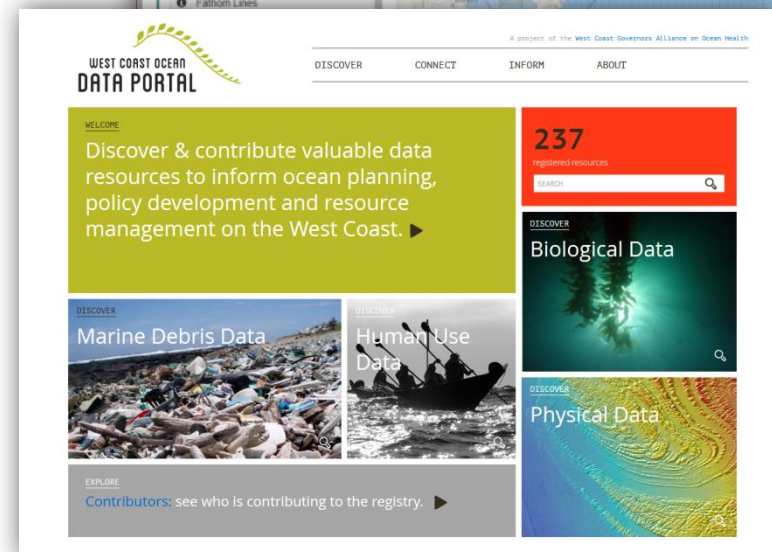
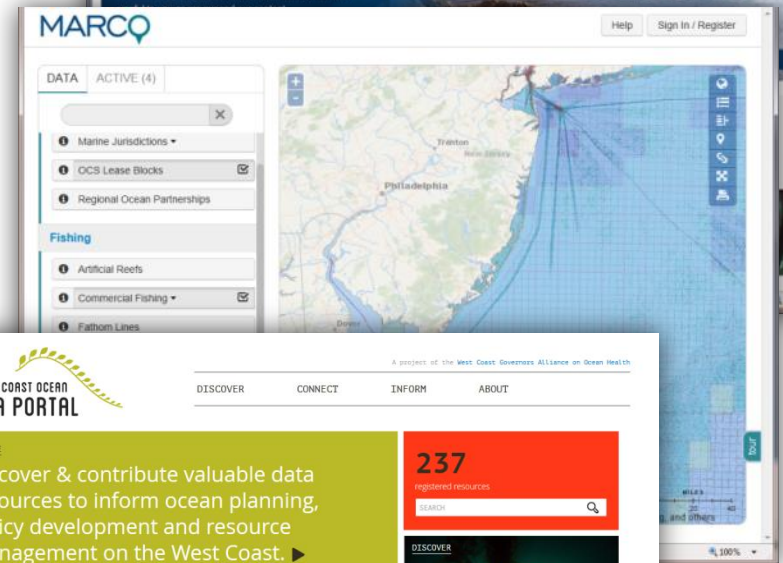
- ❑ 2013, 2014 AIS
- ❑ Aquaculture
- ❑ Fisheries Data
- ❑ Marine Mammals Updates
- ❑ Navy Operation Areas
- ❑ Sand and Gravel Borrow areas
- ❑ Shallow-water Benthic Cover
- ❑ Submarine Cables
- ❑ West Coast Bathymetry
- ❑ West Coast Bird & Mammal Surveys

# Sharing Data

- Map Services
- 58 Distributed Map Services
  - ~250 data layers
- 28 Data Providers
  - 16 publishing map services

# Regional Ocean Partnerships

- ❑ Authoritative National level data being integrated into regional portals
- ❑ Many data layers being consumed as web services
- ❑ Collaboration on portal design and data management
- ❑ Sharing lessons learned





# WEST COAST OCEAN DATA PORTAL

## Northeast Ocean Data Viewer

A component of the [Northeast Ocean Data Portal](#)

Turn all Layers Off Share

Keyword



- Active Renewable Energy Lease Areas
  - BOEM Wind Planning Areas**
  - Submarine Cables
  - Submarine Cable Areas Zoom to View
  - Submarine Pipeline Areas Zoom to View
- Industrial**
- Coastal Energy Facilities
  - EPA-Regulated Facilities Zoom to View
  - Ocean Disposal Sites

**Routing Measures**  
Various shipping zone flow, while traffic separation lanes must navigate with caution.

Source: [MarineCad](#)

**Shipwreck Density**  
Density map of reported shipwrecks on the Atlantic Ocean. Because this information represents a complete decision-making or planning tool.

Source: [BOEM](#)

**Habitat Areas of Particular Concern (HAPC)**

**BOEM Wind Planning Areas**

**BOEM Wind Planning Areas**

Source: [NOAA](#)  
Notes: NOAA ENC planning and research

- Show More Formats
- Form...
  - ZIP (60)
  - Esri REST (27)
  - ArcGIS Online Map (20)
  - WMS (1)
  - Show More Formats

SEARCH KEYWORDS

- Location** >
- Categories** >
- Issues** >
- Sources**
  - Bureau Of Ocean Energy Management - Pacific Region **13**
  - Csumb Seafloor Mapping Lab **1**
  - California Coastal Geportal **62**
  - Marine Cadastre.gov **75**
  - Noaa Coral Reef Information System **1**
  - Noaa Mpa Center **6**
  - National Ocean Service **9**
  - Oregon Coastal Atlas **50**
  - Oregon Spatial Data Library **20**
  - U.s. Geological Survey **1**
  - Wcga Marine Debris Database **1**
  - Washington State Geospatial Clearinghouse **42**

[NEWS](#)
[ABOUT THE PORTAL](#)
[VISIT MARCO](#)

Define specific traffic hot areas where ships will.

Map icons:

Map icons:

Map icons:

Map icons:

Map icons:

**Substrate**

Those locations offshore where seabed substrates that could be adversely affected.

*Scale*



MarineCadastre.gov

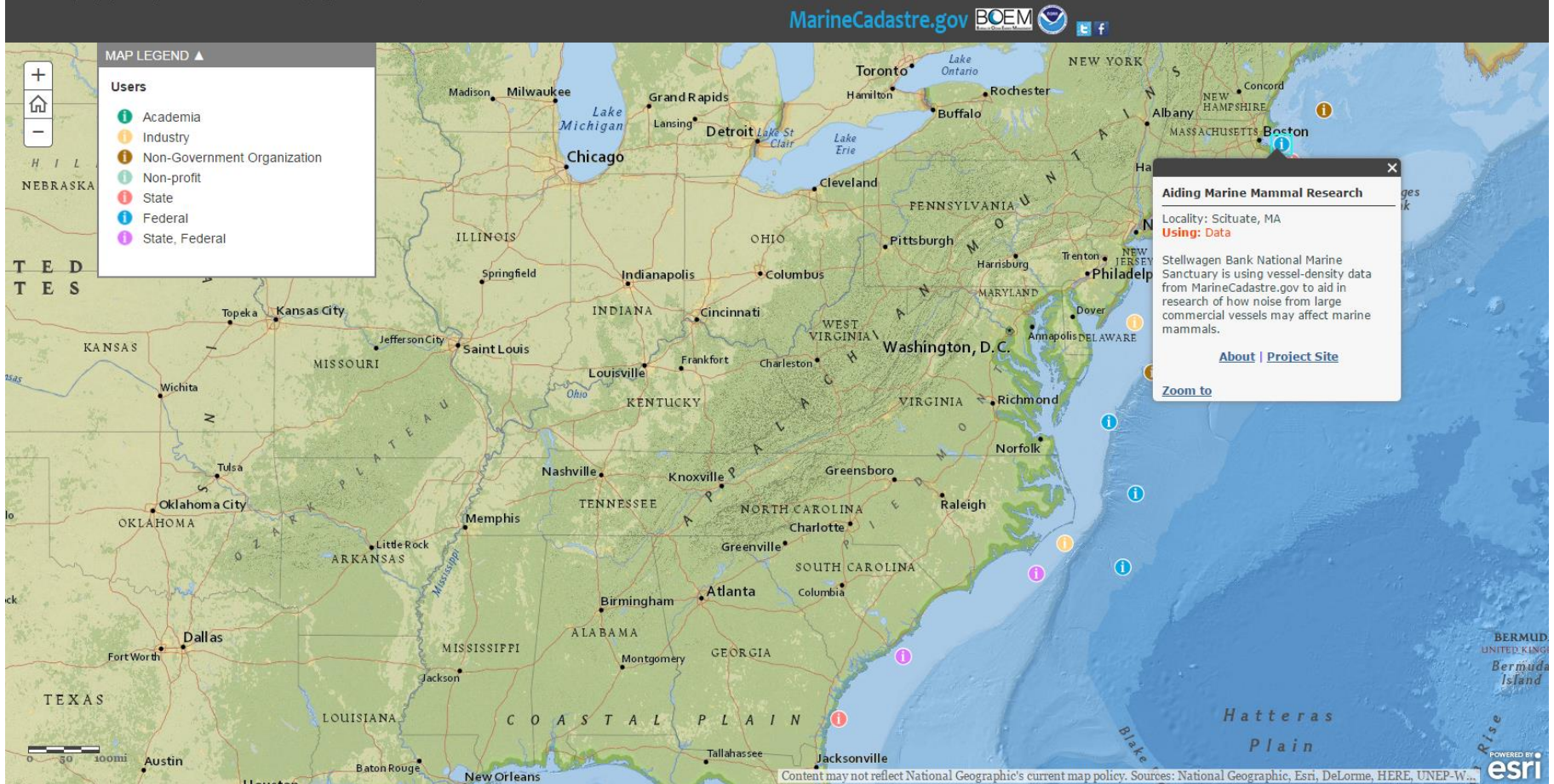
**New Features Demo**

# Who is using it and how?

Industry and Consultants; Regional Ocean Partnerships;  
Federal and State Agencies; Academia; NGOs...

## Mapping Uses of MarineCadastr.gov

This map displays examples of how MarineCadastr.gov products are being used around the United States.

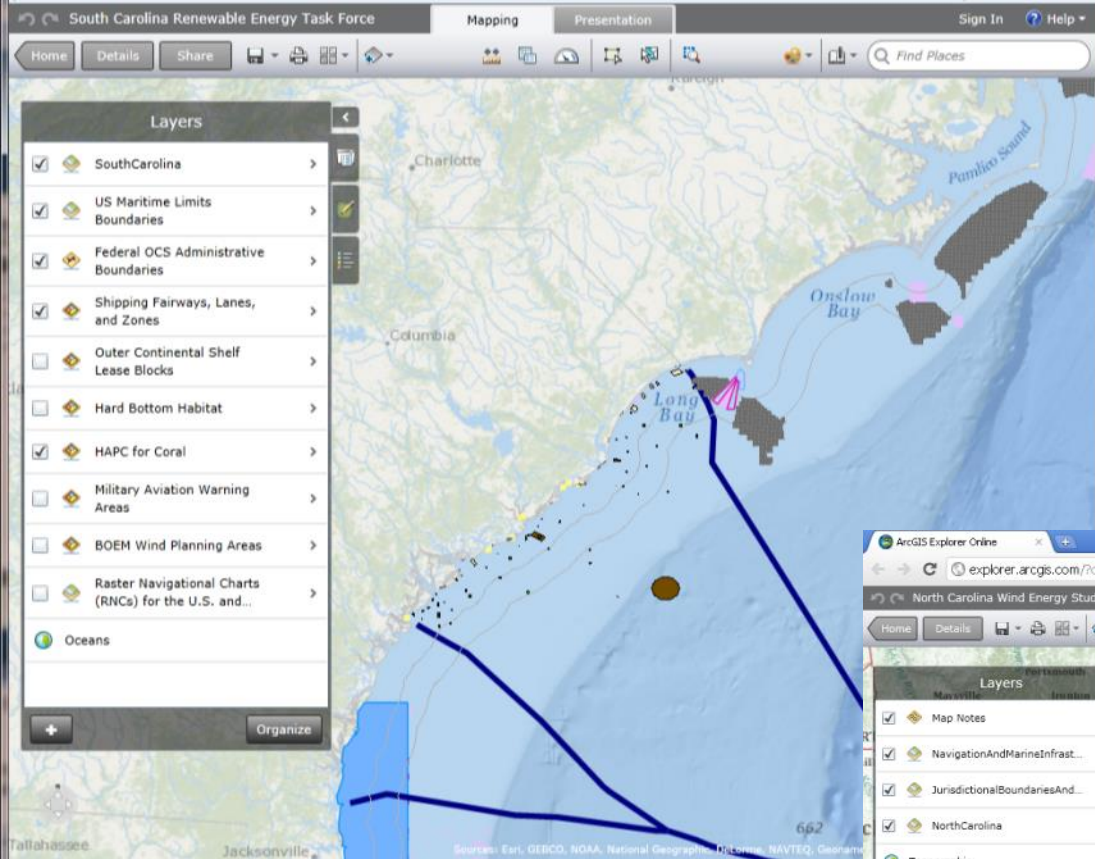


# Use by Industry and Consultants

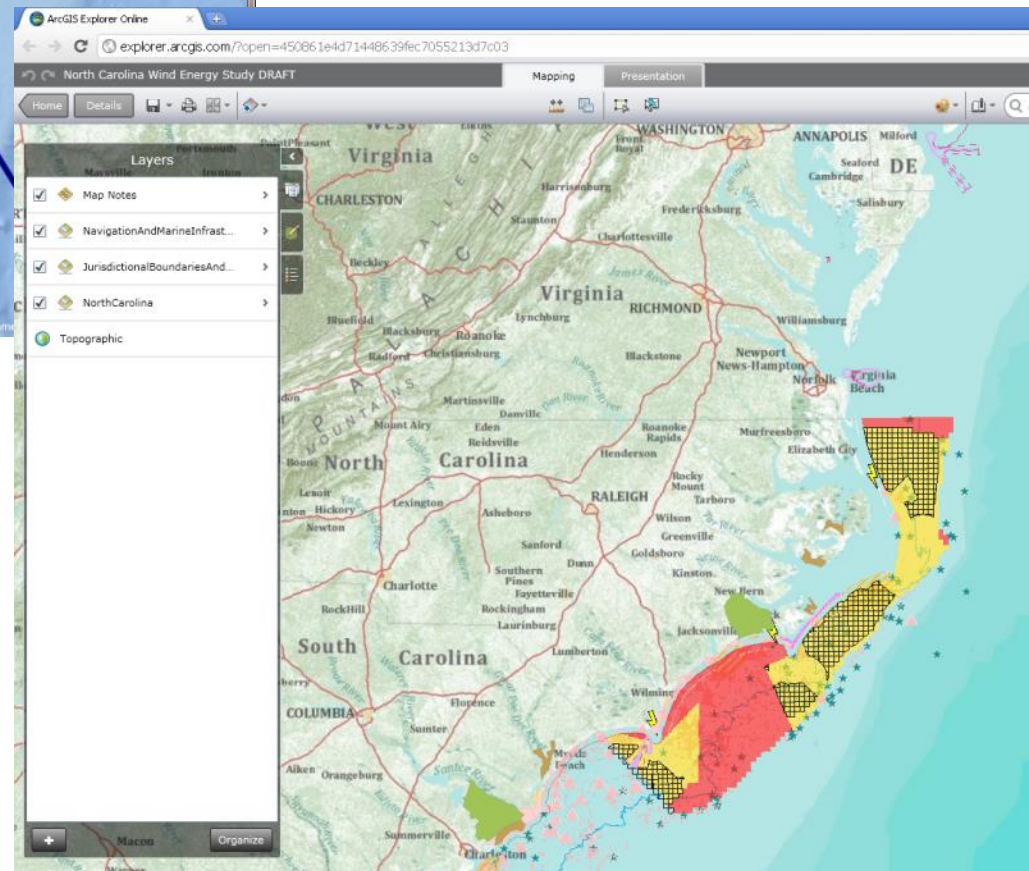
- ❑ Screening Potential Locations for Offshore Energy Projects
- ❑ Providing Access to Information for Environmental Assessments







# Example BOEM Uses



# State Renewable Energy Task Forces

# Questions?





**FOR MORE INFORMATION**

**LINDSAY GOODWIN  
LINDSAY.GOODWIN@NOAA.GOV**

**MARINECADASTRE.GOV**



**@MarineCadastre**

**[www.marinecadastre.gov](http://www.marinecadastre.gov)**